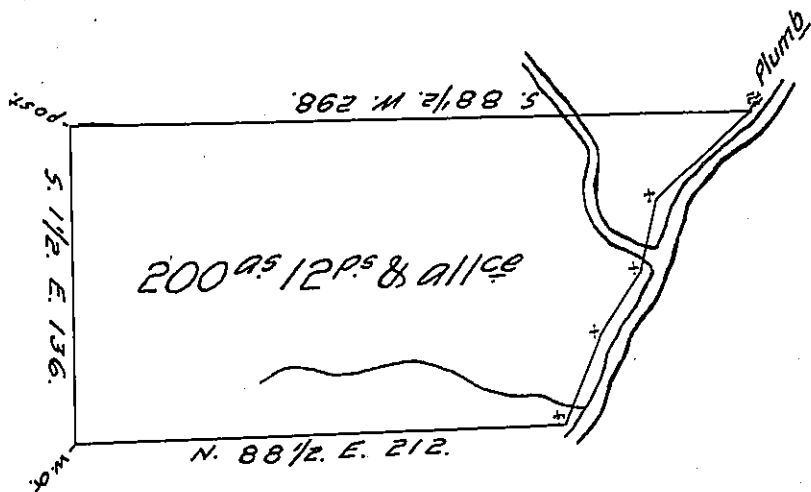


N. 22 E. 39.
 N. 33 E. 34.
 N. 8 E. 34.
 N. 41 E. 24.
 N. 56 E. 29.4



The above Draft of a Tract of land Containing two hundred Acres, twelve perches and Allowance. Situate in the Purchase, East of Allegheny River, on the West Branch of Susquehanna, in Clearfield County, opposite the Town of Clearfield, is part of three hundred ninety Eight acres, ninety Eight perches and Allow. Survey^d for the Rev^d William Marshal in pursuanc- of his Lottry Warrent, N^o 28 dated the 17th Day of May 1785, Survey^d and divided off for M^r Abraham Witmer this first Day of Novemb- 1806.

S. Stewart, D. S.

To Samuel Cochran, Esquire,
 Surveyor Gen!

IN TESTIMONY that the above is a copy of the original remaining on file in the Department of Internal Affairs of Pennsylvania, made conformably to an Act of Assembly approved the 16th day of February, 1833, I have hereunto set my Hand and caused the Seal of said Department to be affixed at Harrisburg, this twenty-sixth day of December 1905.

Loac R Brown
 Secretary of Internal Affairs.